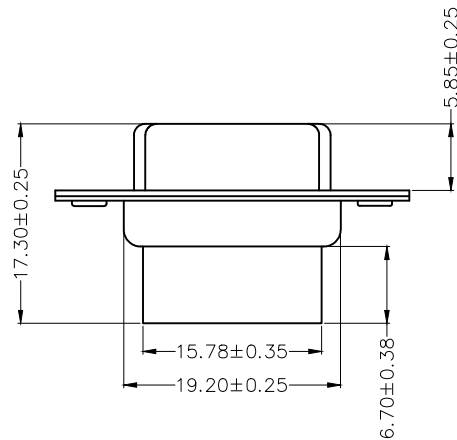
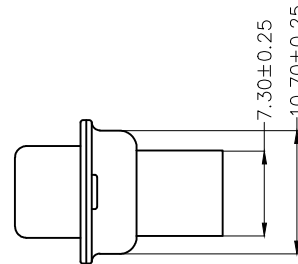
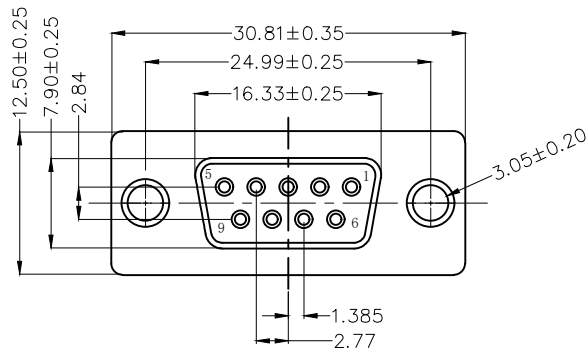
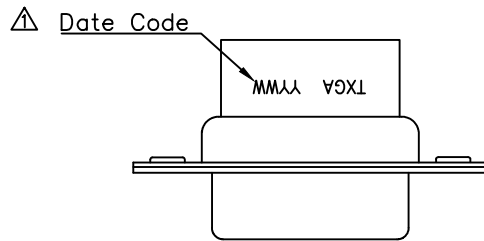


REV	LOCATIONS	DESCRIPTION	DATE	REVISER	APPD
0		New Drawing	19/DEC/23	MATT	LEO
1	△	Add marking code	13/Jan/25	NICK	LEO



SPECIFICATIONS

Electrical

Current Rating: 3A AC(rms)/DC
Voltage Rating: 250V AC(rms)/DC
Contact Resistance: 30 mΩ Max
Insulation Resistance: 1000 MΩ MIN@500V DC
Withstanding Voltage: 500V AC r.m.s
Temperature Range-Operating: -55°C~+105°C

Material and Plating

Housing: PBT+30%GF (UL 94V-0) Black
Front Shell: Spcc/ Nickel plated
Back Shell: Spcc/ Tin plated

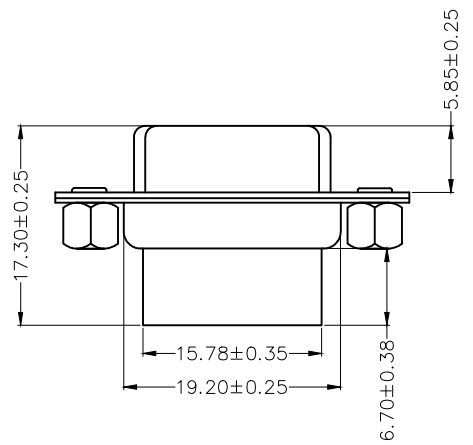
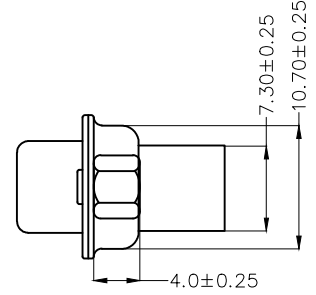
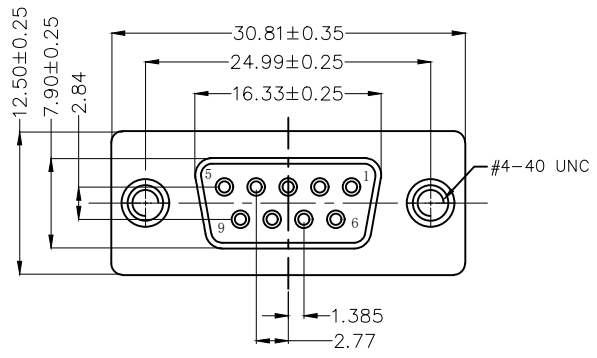
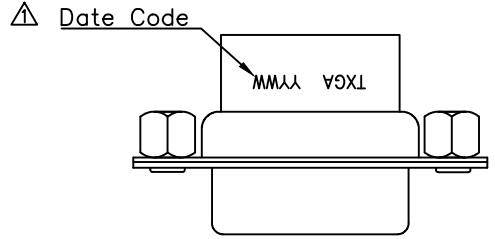
Ordering Information

FDB 09 08 - F0 T S 0 00 K6 K A
1 2 3 4 5 6 7 8 9

1	Category FDB- D-SUB	2	Circuits 09	3	Distinction No. 08	4	Type F0-Female	5	Assembly Layout T-Terminal type
6	Entry Angle S-180° Vertical	7	Color-Resin K6-Black	8	Packaging K-Tray	9	Distinction Type A-A Type		

 THIRD ANGLE PROJECTION	GENERAL TOLERANCES (UNLESS SPECIFIED)		APPROVE BY LEO	DATE 19/DEC/23	PART NO. FDB0908-FOTS000K6KA	ITEM NO. FDB0908	 Building Technology Cornerstone
	DESIGN UNITS Metric(mm)	X.±0.30	X.'±5'	CHECKED BY GISELLE	DATE 19/DEC/23	TITLE D-SUB Connector 9Circuits Terminal type Female	
SCALE 5:1	SIZE A4	X.XX±0.20	X.'±2'	DRAWN BY MATT	DATE 19/DEC/23	THIS DRAWING CONTAINS INFORMATION THAT IS PROPRIETARY TO TXGA INDUSTRIAL ELECTRONICS(S.Z)CO.,LTD AND SHOULD NOT BE USED WITHOUT WRITTEN PERMISSION	
		X.XX±0.15	.XX'±1'			REV 1	SHEET NO. 1/1
		X.XXX±0.10	.XXX'±0.5'				

REV	LOCATIONS	DESCRIPTION	DATE	REVISER	APPD
0		New Drawing	19/DEC/23	MATT	LEO
1	△	Add marking code	13/Jan/25	NICK	LEO



SPECIFICATIONS

Electrical

- Current Rating: 3A AC(rms)/DC
- Voltage Rating: 250V AC(rms)/DC
- Contact Resistance: 30 mΩ Max
- Insulation Resistance: 1000 MΩ MIN@500V DC
- Withstanding Voltage: 500V AC r.m.s
- Temperature Range-Operating: -55°C~+105°C

Material and Plating

- Housing: PBT+30%GF (UL 94V-0) Black
- Front Shell: Spcc/ Nickel plated
- Back Shell: Spcc/ Tin plated

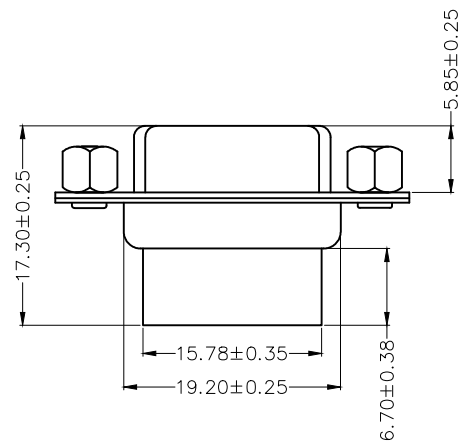
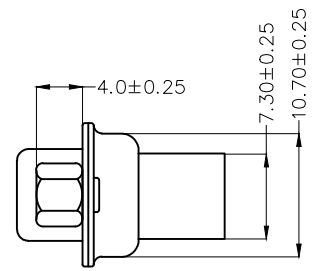
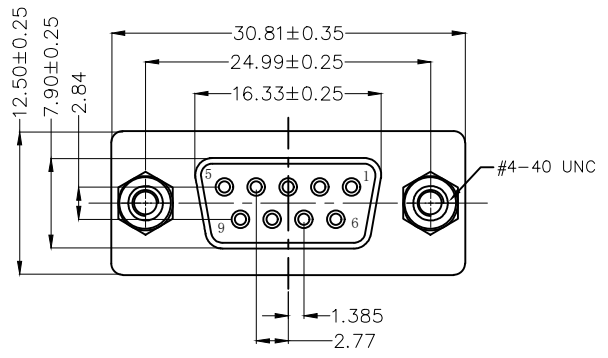
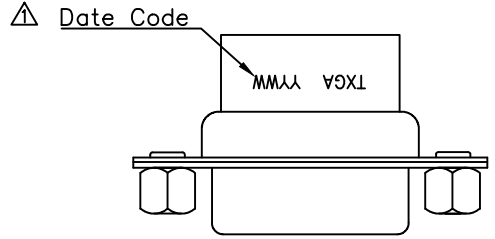
Ordering Information

FDB 09 08 - F0 T S 0 00 K6 K B
 1 2 3 4 5 6 7 8 9

1	Category FDB- D-SUB	2	Circuits 09	3	Distinction No. 08	4	Type F0-Female	5	Assembly Layout T-Terminal type
6	Entry Angle S-180° Vertical	7	Color-Resin K6-Black	8	Packaging K-Tray	9	Distinction Type B-B Type		

 THIRD ANGLE PROJECTION	GENERAL TOLERANCES (UNLESS SPECIFIED)		APPROVE BY LEO	DATE 19/DEC/23	PART NO. FDB0908-FOTS000K6KB	ITEM NO. FDB0908	 Building Technology Cornerstone	
	X.±0.30	X.'±5'	CHECKED BY GISELLE	DATE 19/DEC/23	TITLE D-SUB Connector 9Circuits Terminal type Female			REV 1
	DESIGN UNITS Metric(mm)	X.X±0.20	.X'±2'	DRAWN BY MATT	DATE 19/DEC/23	THIS DRAWING CONTAINS INFORMATION THAT IS PROPRIETARY TO TXGA INDUSTRIAL ELECTRONICS(S.Z)CO.,LTD AND SHOULD NOT BE USED WITHOUT WRITTEN PERMISSION		
	SCALE 5:1	SIZE A4	X.XX±0.15	.XX'±1'				
		X.XXX±0.10	.XXX'±0.5'					

REV	LOCATIONS	DESCRIPTION	DATE	REVISER	APPD
0		New Drawing	19/DEC/23	MATT	LEO
1	△	Add marking code	13/Jan/25	NICK	LEO



SPECIFICATIONS

Electrical

- Current Rating: 3A AC(rms)/DC
- Voltage Rating: 250V AC(rms)/DC
- Contact Resistance: 30 mΩ Max
- Insulation Resistance: 1000 MΩ MIN@500V DC
- Withstanding Voltage: 500V AC r.m.s
- Temperature Range-Operating: -55°C~+105°C

Material and Plating

- Housing: PBT+30%GF (UL 94V-0) Black
- Front Shell: Spcc/ Nickel plated
- Back Shell: Spcc/ Tin plated

Ordering Information

FDB 09 08 - F0 T S 0 00 K6 K C
 1 2 3 4 5 6 7 8 9

1	Category FDB- D-SUB	2	Circuits 09	3	Distinction No. 08	4	Type F0-Female	5	Assembly Layout T-Terminal type
6	Entry Angle S-180° Vertical	7	Color-Resin K6-Black	8	Packaging K-Tray	9	Distinction Type C-C Type		

 THIRD ANGLE PROJECTION	GENERAL TOLERANCES (UNLESS SPECIFIED)		APPROVE BY LEO	DATE 19/DEC/23	PART NO. FDB0908-FOTS000K6KC	ITEM NO. FDB0908	 Building Technology Cornerstone	
	X.±0.30	X.'±5'	CHECKED BY GISELLE	DATE 19/DEC/23	TITLE D-SUB Connector 9Circuits Terminal type Female			REV 1
	DESIGN UNITS Metric(mm)	X.X±0.20	.X'±2'	DRAWN BY MATT	DATE 19/DEC/23	THIS DRAWING CONTAINS INFORMATION THAT IS PROPRIETARY TO TXGA INDUSTRIAL ELECTRONICS(S.Z)CO.,LTD AND SHOULD NOT BE USED WITHOUT WRITTEN PERMISSION		
	SCALE 5:1	SIZE A4	X.XX±0.15	.XX'±1'				
		X.XXX±0.10	.XXX'±0.5'					